



## Second Judicial District Court Judicial Supervision and Diversion Program

### Outcome Measures July 1, 2017 – June 30, 2019

#### Sample

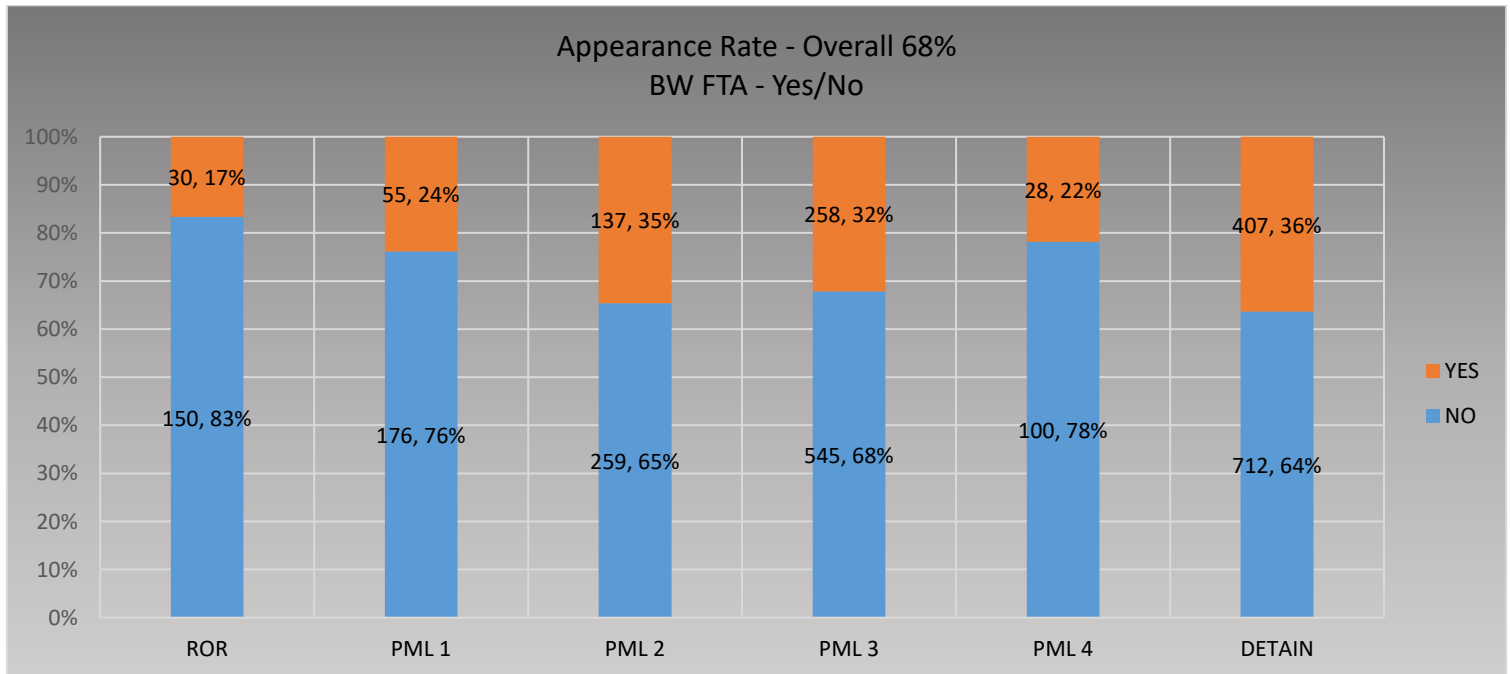
Cases in this data set include:

- Felony cases that were ordered to 2<sup>nd</sup> Judicial District Court- Pretrial Services; and that
- Supervision case closed between July 1, 2017 and June 30, 2019; and that
- Had a PSA completed; and where
- The defendant was released from custody for a period of time during the pretrial phase of the case.

This sample does *not* include misdemeanors, cases that remain open and pending, cases where a defendant was not referred to Pretrial Services, or cases in which no PSA was completed (cases that either came into the system prior to implementation of the PSA or where defendant never was in custody). It is therefore expected that this data understates the appearance rate and the safety rate because some of the lowest risk defendants are not included in the sample.

#### ❖ Appearance Rate Overall - 68%

- The following data includes all cases that were ordered to Pretrial Supervision, the defendant was released from custody, a PSA was completed, and Pretrial Supervision has ended for the case. There are 2,857 cases total. 1,942 appeared to all scheduled court hearings. 915 did not appear to all scheduled court hearings and a BW FTA was issued.



- **Appearance Rate by Position in Release Matrix**

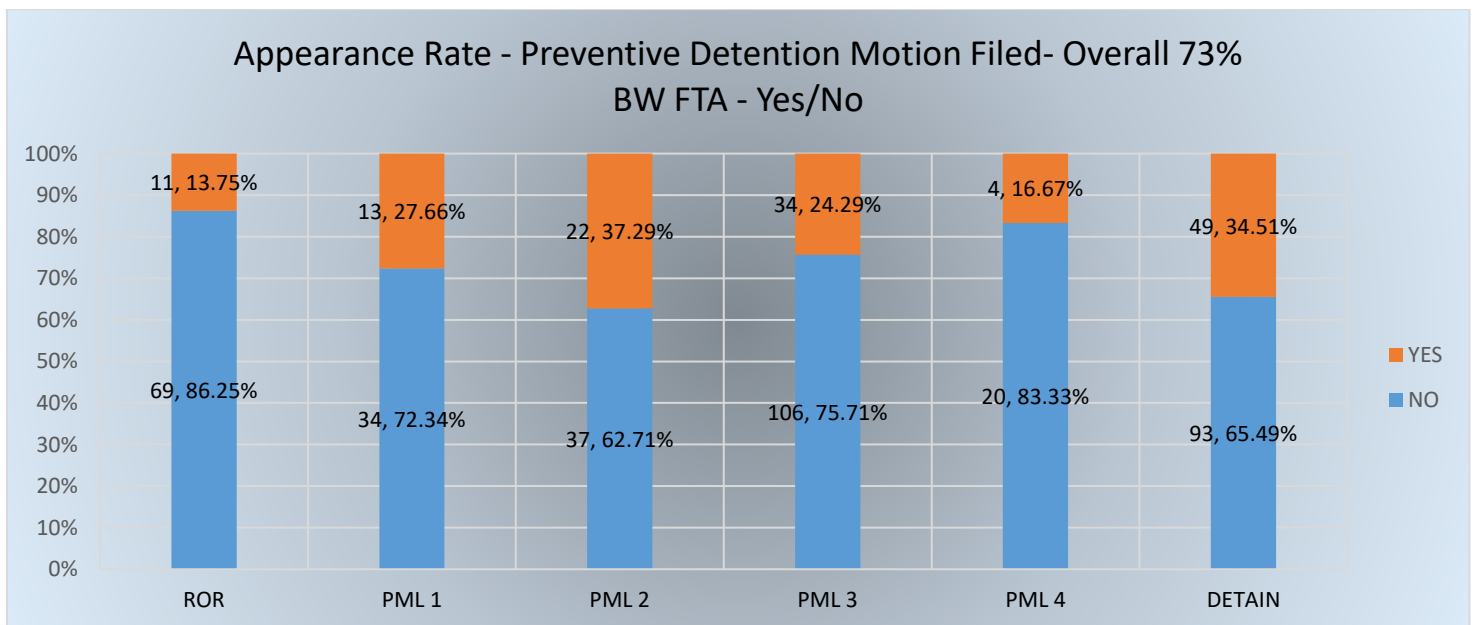
New Criminal Activity Scale							
Failure To Appear Scale	NCA 1	NCA 2	NCA 3	NCA 4	NCA 5	NCA 6	
	FTA 1	(A) ROR – 64, 85%	(B) ROR - 30, 71%				
	FTA 2	(C) ROR – 20, 77%	(D) ROR – 36, 97%	(E) ROR-PML1 – 83, 83%	(F) ROR-PML3 – 52, 81%	(G) ROR-PML4 – 4, 80%	
	FTA 3		(H) ROR-PML1 – 55, 81%	(I) ROR-PML2 – 128, 74%	(J) ROR-PML3 – 135, 77%	(K) ROR-PML4 – 23 79%	(L) DETAIN if const. reqs. met OR RELEASE with max conditions – 6, 55%
	FTA 4		(M) ROR-PML1 – 38, 60%	(N) ROR-PML2 – 80, 61%	(O) ROR-PML3 – 163, 73%	(P) ROR-PML4 – 73, 78%	(Q) DETAIN if const. reqs. met OR RELEASE with max conditions – 24, 77%
	FTA 5		(R) ROR-PML2 – 12, 67%	(S) ROR-PML2 – 39, 52%	(T) ROR-PML3 – 195, 57%	(U) DETAIN if const. reqs. met OR RELEASE with max conditions – 211, 61%	(V) DETAIN if const. reqs. met OR RELEASE with max conditions – 86, 65%
	FTA 6				(W) DETAIN if const. reqs. met OR RELEASE with max conditions - 52, 53%	(X) DETAIN if const. reqs. met OR RELEASE with max conditions – 70, 63%	(Y) DETAIN if const. reqs. met OR RELEASE with max conditions – 263, 68%

- **Appearance Rate by Supervision Level:**

Supervision Levels	Percent
ROR	83%
PML 1	76%
PML 2	65%
PML 3	68%
PML 4	78%
DETAIN if const. reqs. met OR RELEASE with max conditions	64%

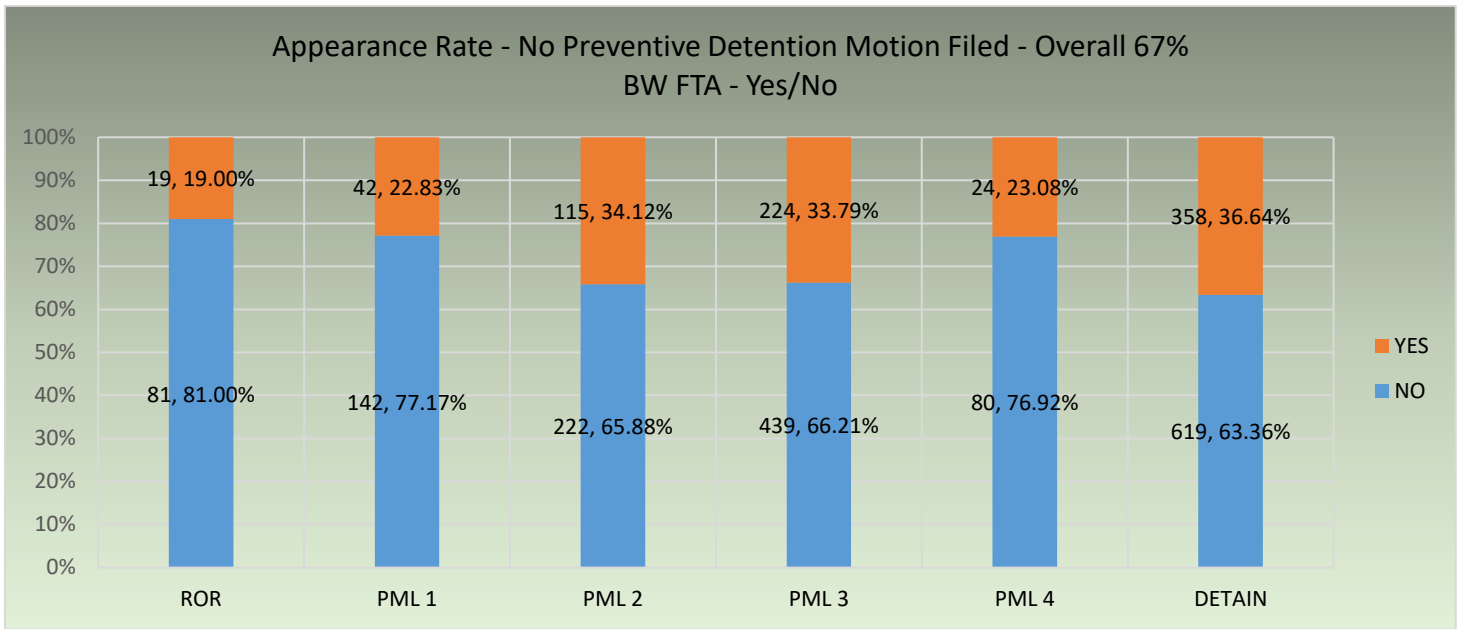
- ❖ **Appearance Rate for cases where a Motion for Preventive Detention was filed- 73%:**

- The data used below includes all cases in which a motion for prevention detention was filed, defendant was ordered to Pretrial Supervision, the defendant was released from custody, a PSA was completed, and Pretrial Supervision has ended for the case. There are 492 cases total. 359 appeared to all scheduled court hearings. 133 did not appear to all scheduled court hearings and a BW FTA was issued. 429 of the 492 motions filed in this data set were denied. 63 motions were initially granted but the defendant was released at a subsequent hearing.



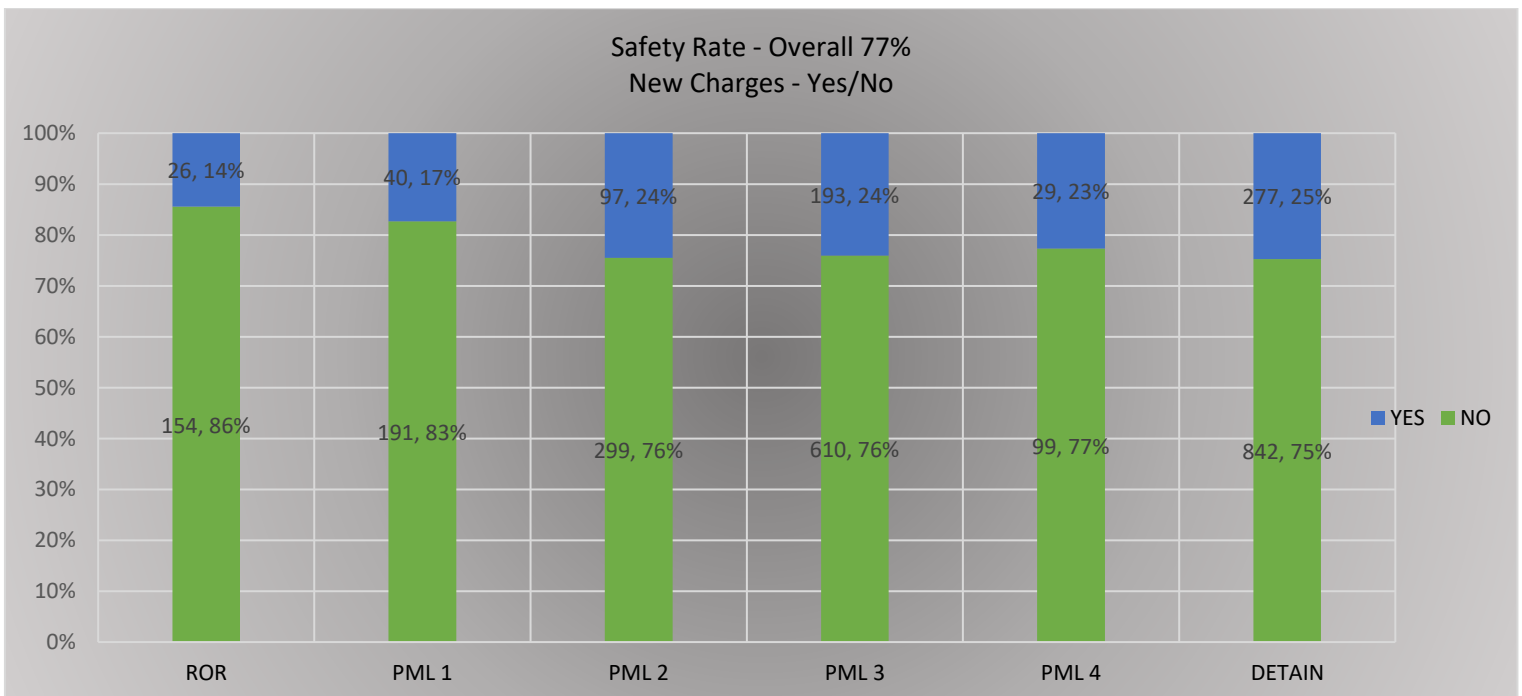
❖ **Appearance Rate for cases where a Motion for Preventive Detention was NOT filed---67%:**

- The data used below includes all cases that were ordered to Pretrial Supervision, the defendant was released from custody, a PSA was completed, Pretrial Supervision has ended for the case, and a motion for prevention detention was NOT filed. There are 2,365 cases total. 1,583 appeared to all scheduled court hearings. 782 did not appear to all scheduled court hearings and a BW FTA was issued.



❖ **Safety Rate Overall – 77%**

- The following data includes all cases that were ordered to Pretrial Supervision, the defendant was released from custody, a PSA was completed, and Pretrial Supervision has ended for the case. There are 2,857 cases total. 2,195 did not have new charges during the pretrial phase of the case. 662 cases had new charges.



- Safety Rate by Position in the Release Matrix

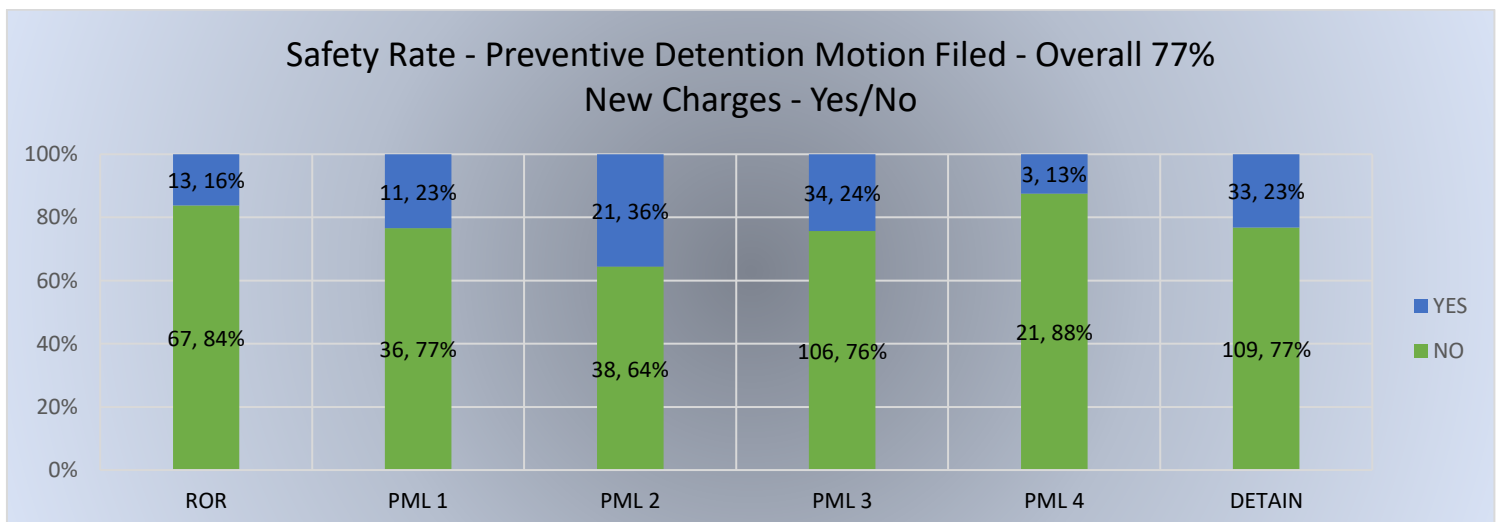
New Criminal Activity Scale							
	NCA 1	NCA 2	NCA 3	NCA 4	NCA 5	NCA 6	
Failure To Appear Scale	FTA 1	(A) ROR – 70, 93%	(B) ROR – 29, 69%				
	FTA 2	(C) ROR – 25, 96%	(D) ROR – 30, 81%	(E) ROR-PML1 – 84, 84%	(F) ROR-PML3 – 52, 81%	(G) ROR-PML4 – 3, 60%	
	FTA 3		(H) ROR-PML1 – 60, 88%	(I) ROR-PML2 – 130, 76%	(J) ROR-PML3 – 137, 78%	(K) ROR-PML4 – 25, 86%	(L) DETAIN if const. reqs. met OR RELEASE with max conditions – 7, 64%
	FTA 4		(M) ROR-PML1 – 47, 75%	(N) ROR-PML2 – 102, 78%	(O) ROR-PML3 – 173, 78%	(P) ROR-PML4 – 71, 76%	(Q) DETAIN if const. reqs. met OR RELEASE with max conditions – 28, 90%
	FTA 5		(R) ROR-PML2 – 12, 67%	(S) ROR-PML2 – 55, 73%	(T) ROR-PML3 – 248, 73%	(U) DETAIN if const. reqs. met OR RELEASE with max conditions – 258, 75%	(V) DETAIN if const. reqs. met OR RELEASE with max conditions – 99, 75%
	FTA 6				(W) DETAIN if const. reqs. met OR RELEASE with max conditions - 75, 77%	(X) DETAIN if const. reqs. met OR RELEASE with max conditions – 87, 78%	(Y) DETAIN if const. reqs. met OR RELEASE with max conditions – 288, 74%

- Safety Rate by Supervision Level

Supervision Levels	Percent
ROR	86%
PML 1	83%
PML 2	76%
PML 3	76%
PML 4	77%
DETAIN if const. reqs. met OR RELEASE with max conditions	75%

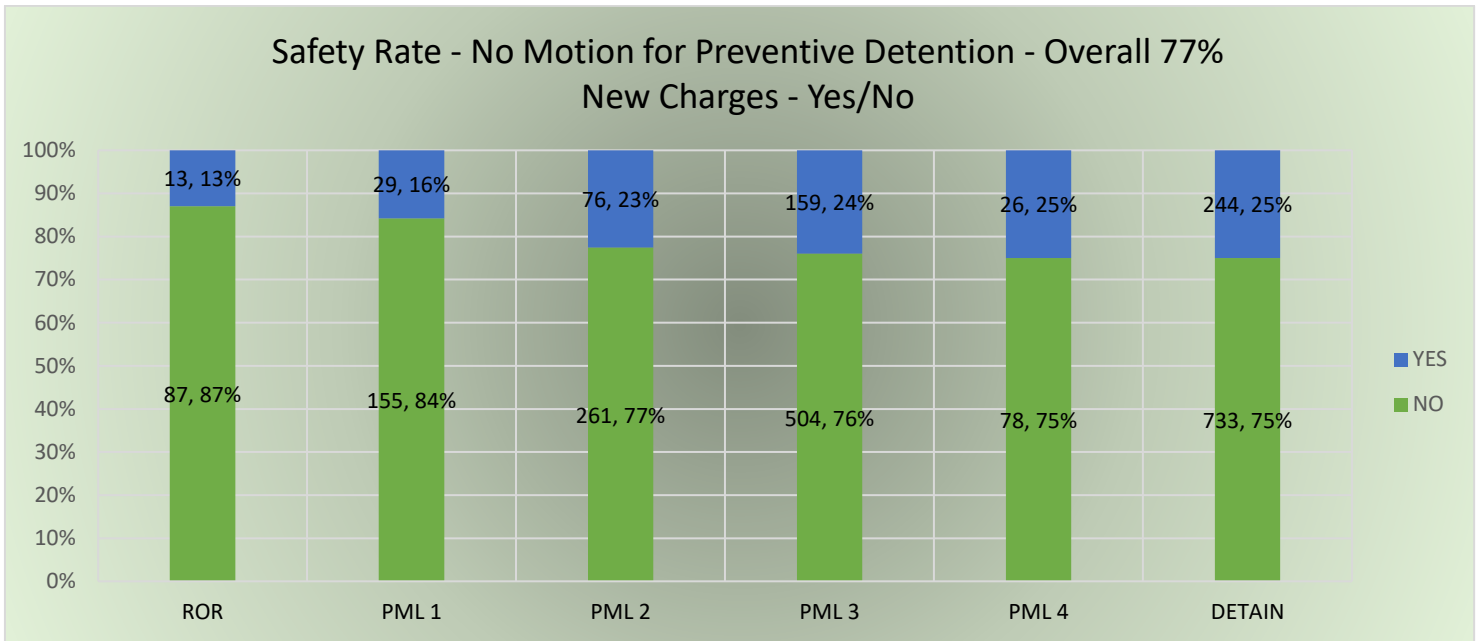
❖ **Safety Rate for cases where a Motion for Preventive Detention was filed—77%:**

- The data used below includes all cases in which a motion for preventive detention was filed, defendant was ordered to Pretrial Supervision, the defendant was released from custody, a PSA was completed, and Pretrial Supervision has ended for the case. There are 492 cases total. 377 did not pick up new charges during the pretrial phase of the case. 115 cases had new charges. 429 of the 492 motions filed in this data set were denied. 63 motions were initially granted but the defendant was released at a subsequent hearing.



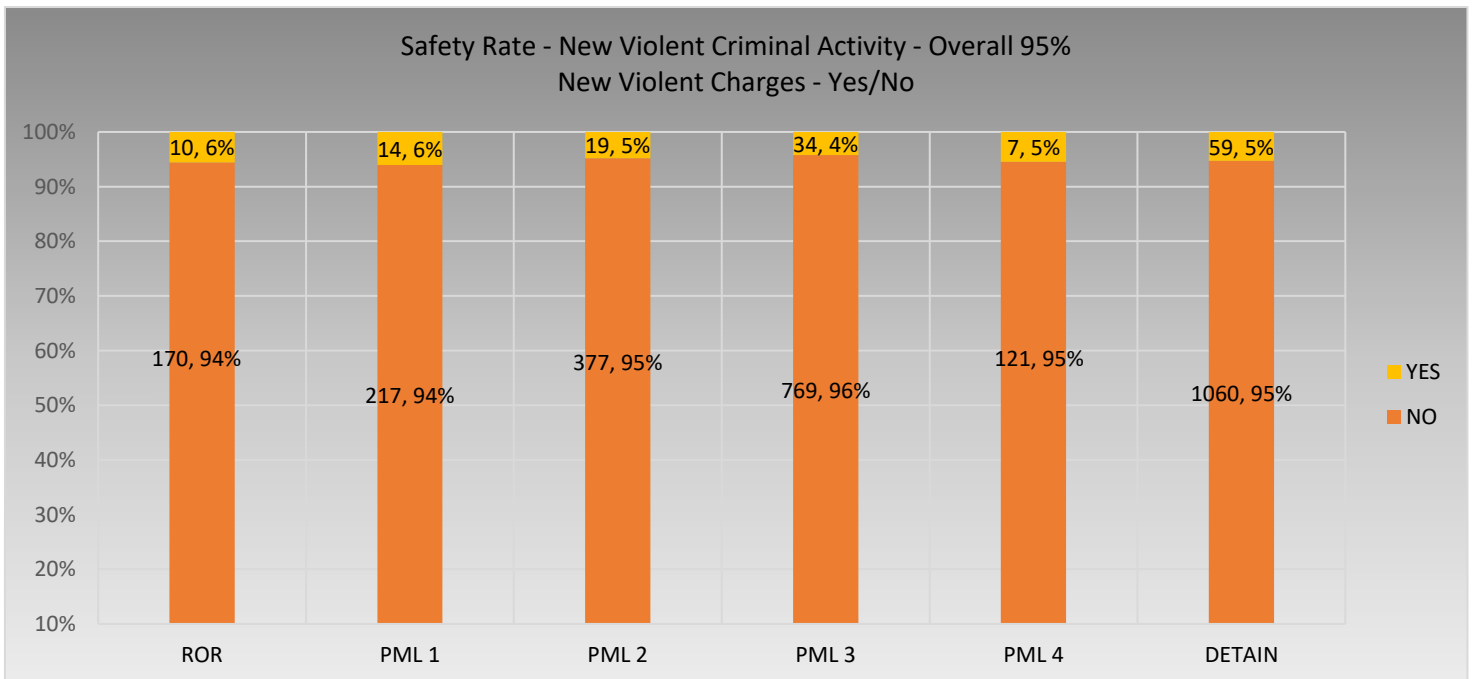
❖ **Safety Rate for cases where a Motion for Preventive Detention was NOT filed—77%:**

- The data used below includes all cases that were ordered to Pretrial Supervision, the defendant was released from custody, a PSA was completed, Pretrial Supervision has ended for the case, and a motion for prevention detention was NOT filed. There are 2,365 cases total. 1,818 did not pick up new charges during the pretrial phase of the case. 547 cases had new charges.



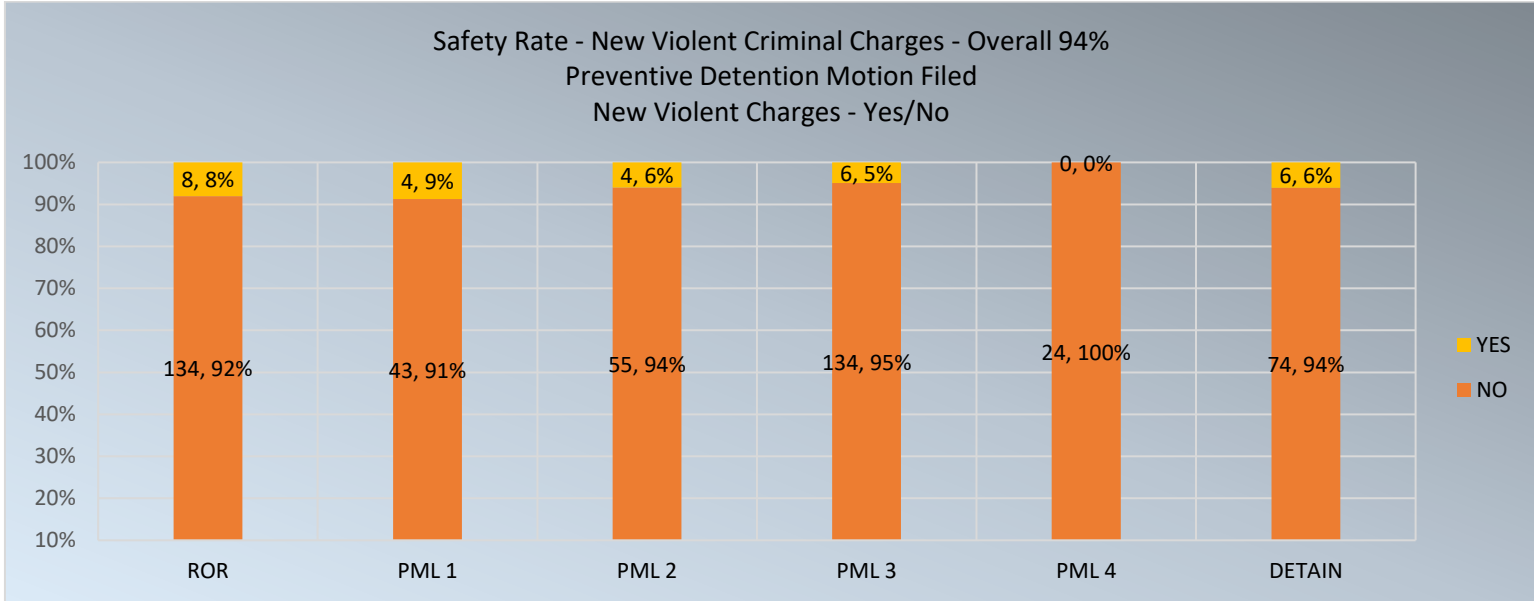
❖ **Safety Rate - New Violent Criminal Activity - Overall – 95%**

- The following data includes all cases that were ordered to Pretrial Supervision, the defendant was released from custody, a PSA was completed, and Pretrial Supervision has ended for the case. There are 2,857 cases total. 2,714 did not have new violent charges during the pretrial phase of the case. 143 cases had new violent charges.



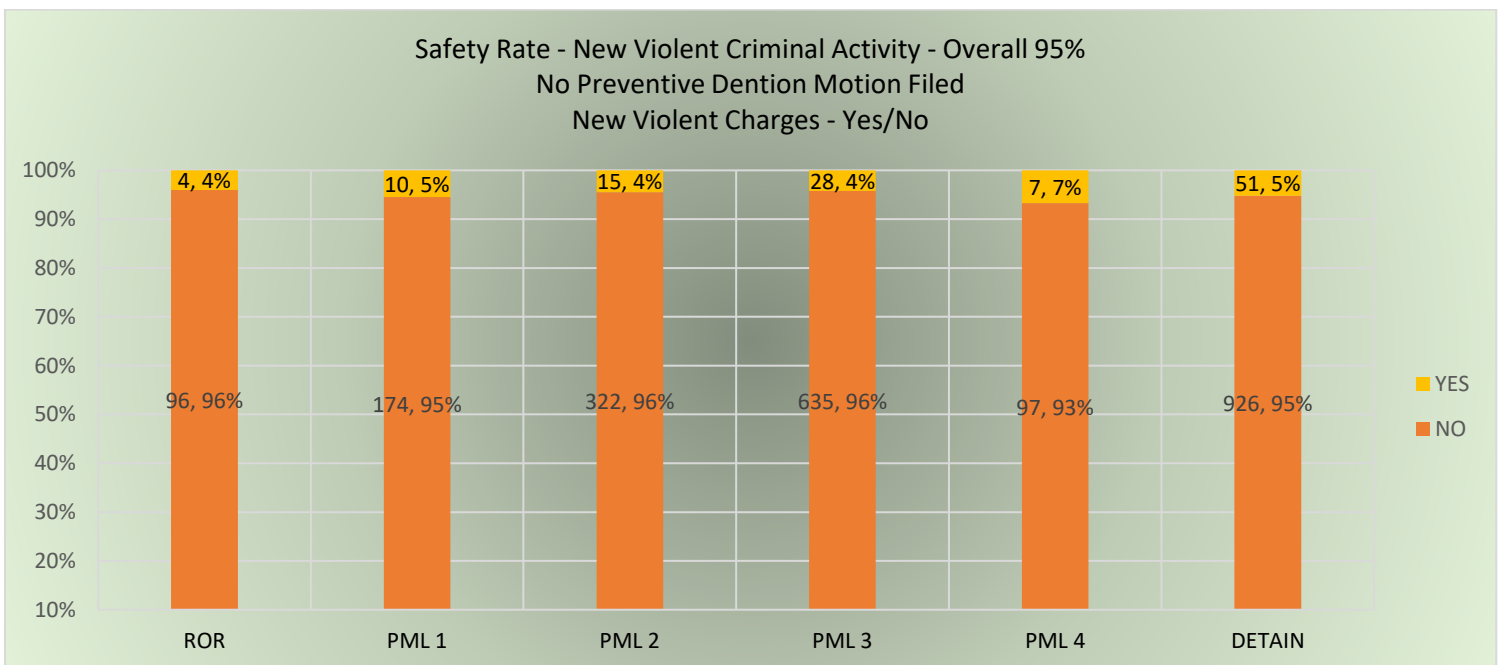
❖ **Safety Rate New Violent Criminal Activity for cases where a Motion for Preventive Detention was filed—94%:**

- The data used below includes all cases in which a motion for preventive detention was filed, defendant was ordered to Pretrial Supervision, the defendant was released from custody, a PSA was completed, and Pretrial Supervision has ended for the case. There are 492 cases total. 464 did not pick up new violent charges during the pretrial phase of the case. 28 cases had new violent charges. 429 of the 492 motions filed in this data set were denied. 63 motions were initially granted but the defendant was released at a subsequent hearing.



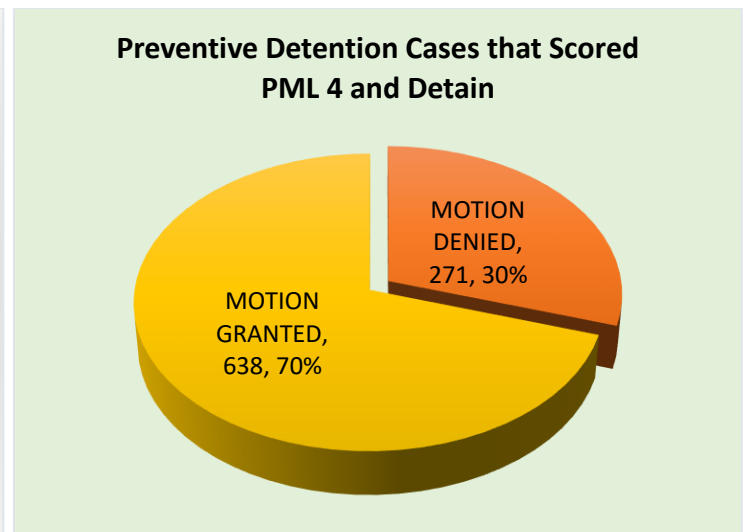
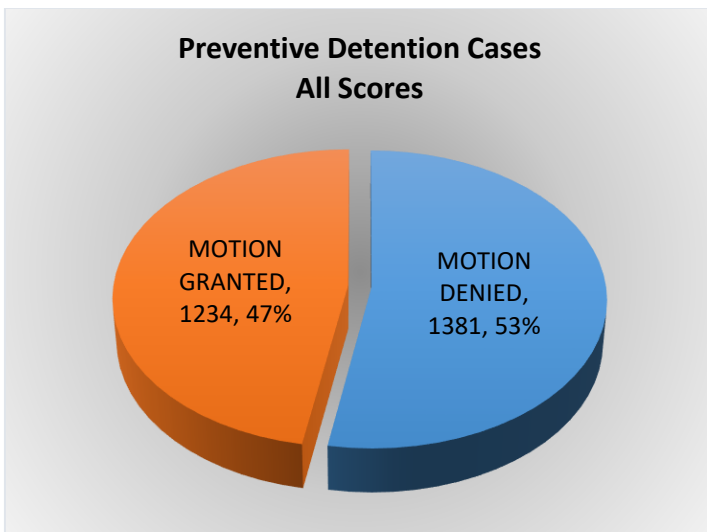
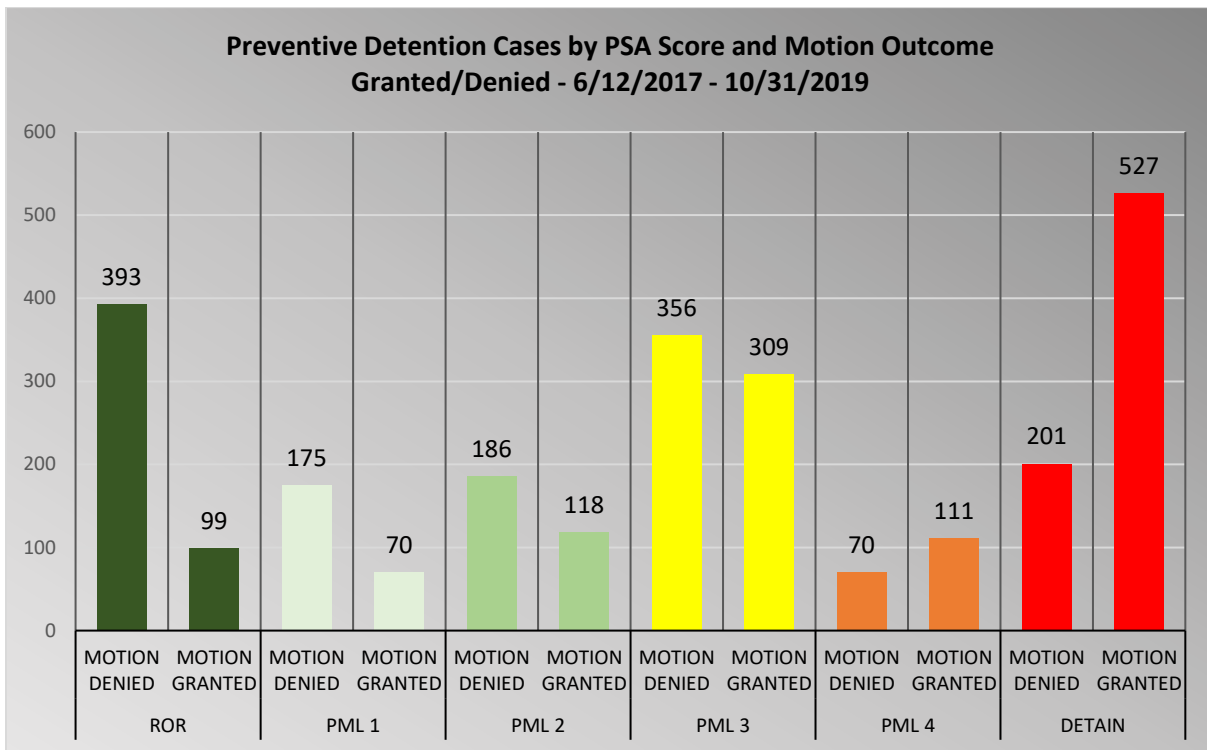
❖ **Safety Rate New Violent Criminal Activity for cases where a Motion for Preventive Detention was NOT filed—95%:**

- The data used below includes all cases that were ordered to Pretrial Supervision, the defendant was released from custody, a PSA was completed, Pretrial Supervision has ended for the case, and a motion for prevention detention was NOT filed. There are 2,365 cases total. 2,250 did not pick up new violent charges during the pretrial phase of the case. 115 cases had new violent charges.



❖ **Motions for Preventive Detention Granted/Denied - 6/12/2019 – 10/31/2019 by PSA Score**

- The data used below illustrates the grant/deny rate for preventive detention motions when grouped by PSA score. The data set below includes cases in which a PSA was completed by Metropolitan Court between June 12, 2019 and October 31, 2019.



- 15,862 PSAs completed by Bernalillo County Metro Court
- 3,611 PSAs completed by Metro scored Detain
- 728 Preventive Detention Motions filed that scored Detain (20.16%)
- 2,883 PSAs that scored Detain did not have a motion for Preventive Detention filed. (79.83%)
- Out of 728 Preventive Detention Motions filed that scored Detain, 527 were granted (72%) and 201 were denied (28%)
- 1,234 Preventive Detention Motions filed were granted (47%) and 1,381 were denied (53%).